



Breastfeeding Policies: Global Trends, Conflicts of Interest and Consequences for Marginalized Communities

August 30th, 2018 | 5:30pm-8:00pm

UCSF Mission Hall Room 1400

550 16th St. San Francisco, CA 94158

RSVP (<https://bit.ly/augustcollab>)

Free event | Open to the public | Dinner served at 5pm
Please help us spread the word!

Celebrate National Breastfeeding Month and Black Breastfeeding Week with us at this month's Collaboratory! We're honored to host a panel of experts who will lead a discussion on current breastfeeding policies, global trends, conflict of interests and the impact on marginalized communities in California.

The discussion will be moderated by:



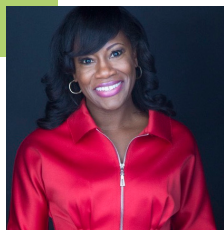
Ifeyinwa Asiodu is an Assistant Professor in the Department of Family Health Care Nursing at University of California, San Francisco (UCSF) School of Nursing.



Aunchalee Palmquist is an Assistant Professor in the Department of Maternal and Child Health and the Carolina Global Breastfeeding Institute (CGBI) at the University of North Carolina-Chapel Hill.



Chyvonne Washington the Program Supervisor for San Mateo County's Black Infant Health Program and current Co-Chair of the African American Community Initiative, San Mateo County.



Kimberly Seals Allers is an award-winning journalist, author and a nationally recognized media commentator, consultant and advocate for breastfeeding and infant health.



Robbie Gonzalez-Dow is the Executive Director of the California Breastfeeding Coalition (CBC) and one of the co-leads of the Breastfeeding Action Network.